

inspir 
direct

... the "Swiss haute couture" in direct esthetic restorations



DIRECT RESTORATIVES

*" Perfection consists not in doing
extraordinary things, but in doing
ordinary things extraordinarily well "*

Angelique Arnauld



inspir^o
direct

... the "Swiss haute couture" in direct esthetic restorations





EdelweissDR is introducing a new level in direct esthetic restorations with its **inspiro** direct system, developed under the guidance of **Dr. Didier DIETSCHI**. This material expands the possibilities in free-hand bonding techniques following the well established "NATURAL LAYERING CONCEPT" leading to uncompromised esthetic and functional results thanks to the new, improved homogenous nano-hybrid technology combining surface smoothness and mechanical strength...

Try and convince yourself!



DIRECT RESTORATIVES

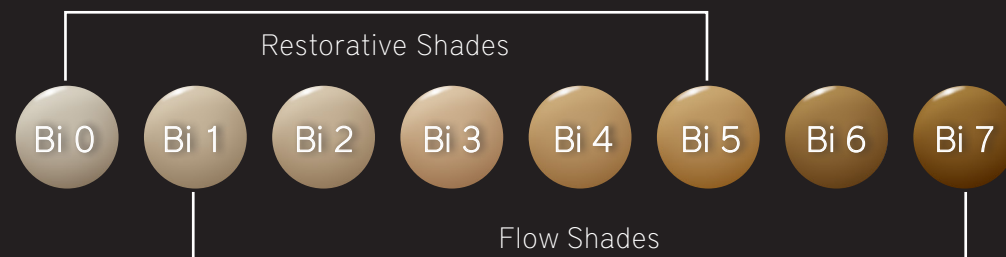
Natural Layering Concept

The concept was introduced in 1995 by Prof. Dr. D. Dietschi and published for the first time in 1997. It is based on the idea of approaching nature as closely as possible, using a simplified and more reliable layering technique with two layers only (dentin & enamel) to perfectly mimic the tooth structure and appearance. **inspiro** composite system represents the latest development in the application the Natural Layering Concept, with improved optical properties and a more comprehensive, logical choice of color and material consistencies to obtain restorations of unsurpassed esthetic integration and quality.

A COMPREHENSIVE ASSORTMENT OF DENTIN & ENAMEL SHADES FOR A 2-LAYER APPROACH

8 intensity levels in **BODY SHADES** for covering all variations in dentin chroma. The system offers 6 chroma levels for the restorative material and 7 chroma levels for the flowable material. Intensity 0 was developed for bleached teeth and masses with chroma intensity extending beyond the VITA color range (intensity 5 to 7) for optimal integration of class V restorations or for dentin mamelons. This comprehensive choice of body shades will allow the clinician to cover all dentin chroma variations found in nature. All body shades exhibit the same color (hue) and a similar opacity and fluorescence, greatly simplifying shade selection, as compared to other systems.

5 tints and translucency levels in **SKIN SHADES** for mimicking all natural enamel variations, which extend esthetic possibilities and system reliability. BLEACH and WHITE skin shades provide the brightness and lightness needed for young patients and rejuvenated smiles; skin NEUTRAL is a very common enamel tint to be used for adult patients, while skin IVORY and TRANSPARENT complete the enamel shades for mature teeth which require more depth and warm tints. 3 out of the 5 restorative skin shades are also available in a flowable consistency.



...layering does not need to be complicated to be highly esthetic!



Natural Tooth

inspiro Tooth

2 Layers only

Skin white

Body i4



DIRECT RESTORATIVES



DIRECT RESTORATIVES



inspiro comprehensive color range & shade guide

The **inspiro** direct shade guide allows a precise and reliable color evaluation. It has been developed as an integrant tool of the "Natural Layering Concept" and includes 2 distinctive restorative layers (body & skin). It has smaller dentin/body samples, which can be inserted into enamel/skin samples to demonstrate any 2-LAYER combination. The selection of enamel/skin is to be made visually where more enamel can be observed, namely in the incisal or proximal areas. It is recommended to use glycerin in between both composite samples.



VITA	A1	B1	C1	A2	B2	C2	A3	B3	C3	A3.5	A4	B4	C4
inspiro Body	i1	i1	i1	i2	i2	i2	i3	i3	i3	i4	i5	i5	i5
inspiro Skin	W/N	I	T	W/N	I	T	N	I	T	N	N	I	T



Step 1: selection of dentin chroma in the cervical area



Step 2: combination of dentin & enamel samples



EFFECT SHADES & POLYCHROMATIC RESTORATIONS

Teeth can present unlimited color and light variations. For the large majority of them, the basic application of the “Natural Layering Concept” will perfectly render the beauty of natural tissues. For the few cases which require additional coloring, the **inspiro** system provides all needed effect shades, which can be used for the following characterization:

AZUR EFFECT

serves to enhance blue-opalescent effects of the incisal edge in front teeth. It is not too intense so that over-characterization can be avoided

CHROMA EFFECT

is used to increase chroma locally when required. It is applied over the normal dentin build-up to mimic all kind of “orange” intensive effects such as dentin sclerosis, counter-opalescence and some forms of pigmentation, due for instance to aging

ICE EFFECT

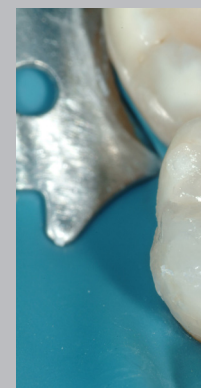
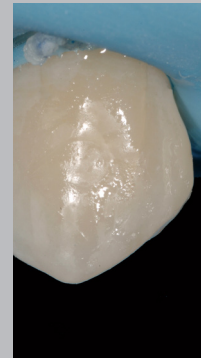
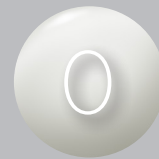
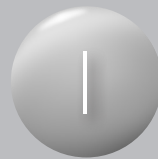
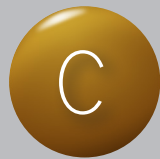
helps to simulate widespread enamel opacities and serves then to create those discrete, natural “imperfections” such as light fluorosis or surface demineralization

OPAQUE EFFECT

is mainly used in combination with other effect shades (i.e.: ICE or CHROMA) to produce “opaquers” of desired shade and chroma to cover either severely discolored tissues or metals

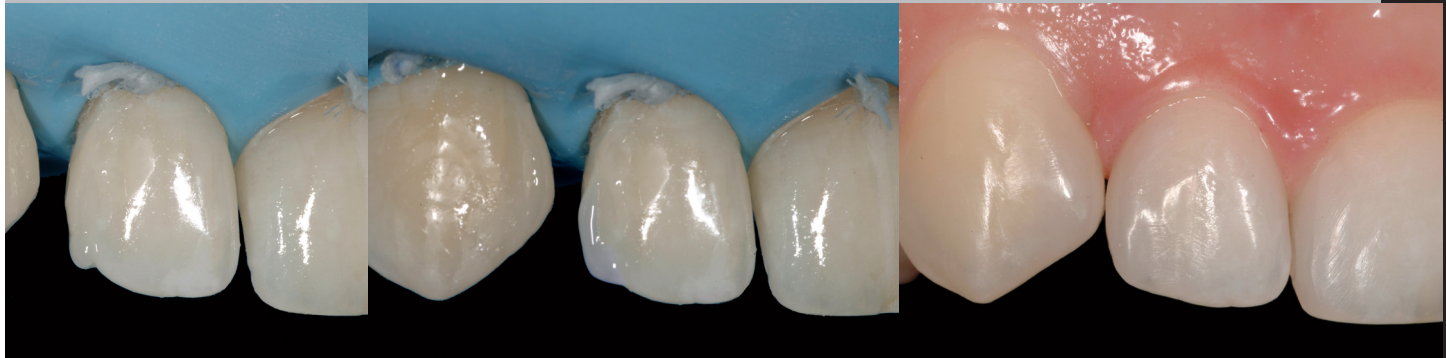
FISSURE EFFECT

is to be placed in the depth of occlusal fissures of class I and II restorations to improve their esthetic integration and stimulate the artistic talent of practitioners when doing posterior restorations





Ice effect



Azur effect



Fissure effect



AZUR

CHROMA

ICE

NANO PARTICLES

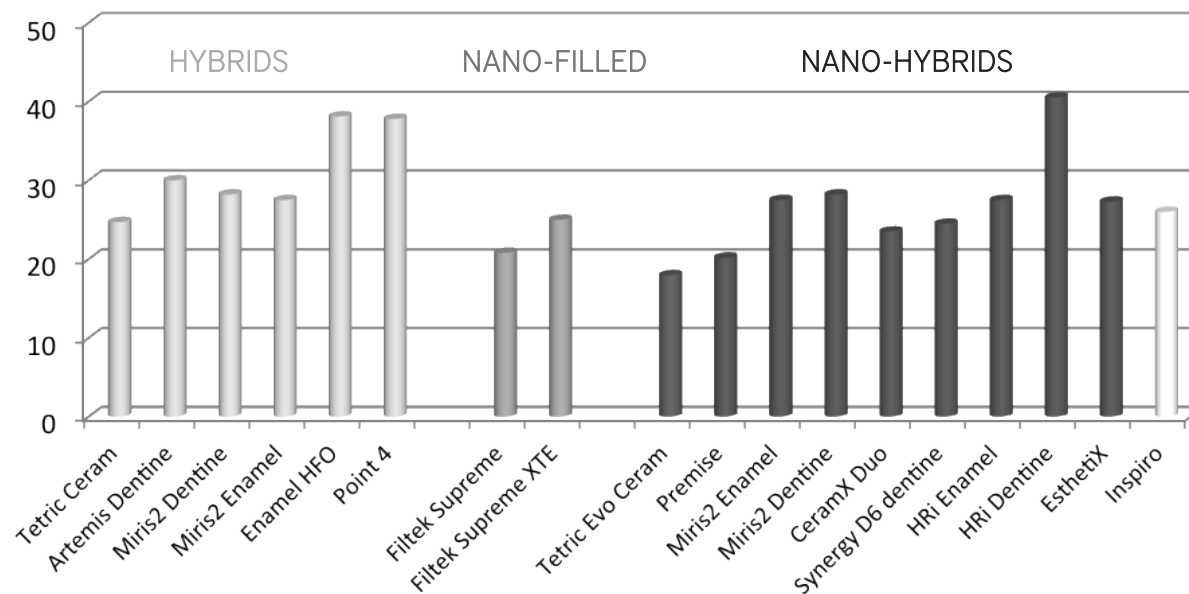
A new homogenous Nano-Hybride Composite:

Fillers with particle sizes in the nanometer range (“nano particles”) show a strong tendency to aggregate and agglomerate. In this “cluster” form, they do not reach their full potential for improvement of the mechanical and surface properties of the composite; in fact, such aggregated and agglomerated nano particles have been known for a long time and used in dental materials for many years (impression materials and composites for instance). **inspiro**, on the contrary, uses a new technology which takes advantage from true nano-particle technology where, differently from all other so called “inhomogeneous” nano-hybrid composites, this ultrafine filler is separated and evenly distributed in the matrix. Here, the nano-particles can reach their full potential for enhancement of surface quality, flexural strength and modulus, among many other unique physicochemical properties.

LINEAR SHRINKAGE DISPLACEMENT

(University of Geneva; according to the methodology of Stavridakis et al, 2003 & 2005)

µm @ 3 minutes for 1mm composite thickness

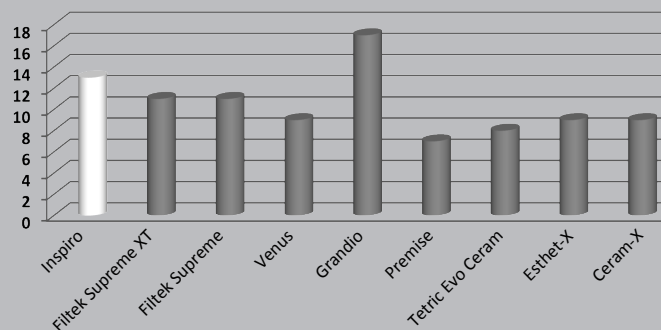


Mechanical properties & benefits:

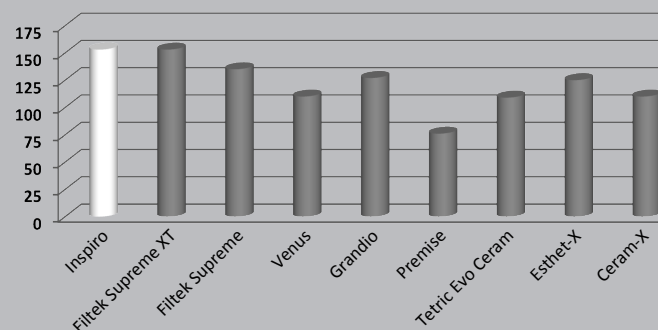
- Low shrinkage due to nano-technology and high amount of filler, 83%
- Very good physical and mechanical properties
- Good abrasion resistance
- Antibacterial surface due to zinc and fluoride particles in the filler
- Excellent polishability and gloss retention
- Natural fluorescence and opalescence

(Source: internal data from EdelweissDR)

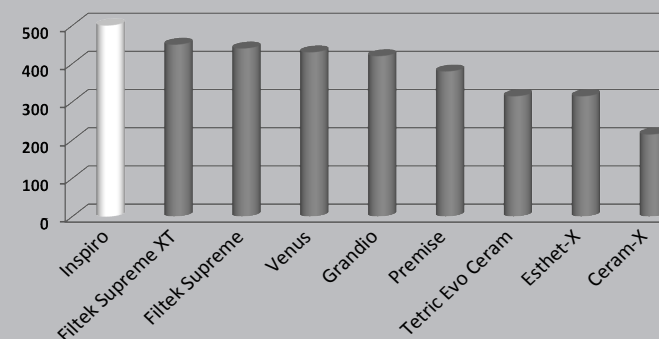
FLEXURAL MODULUS (GPa)



FLEXURAL STRENGTH (MPa)



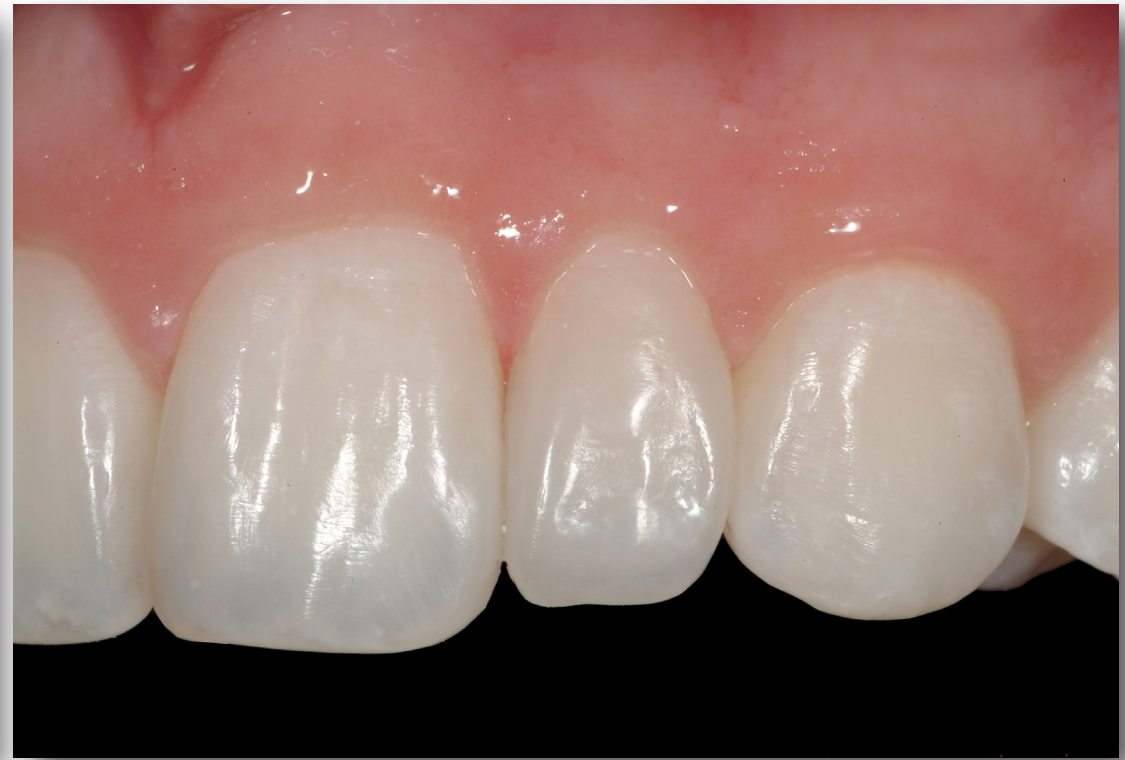
COMPRESSIVE STRENGTH (MPa)

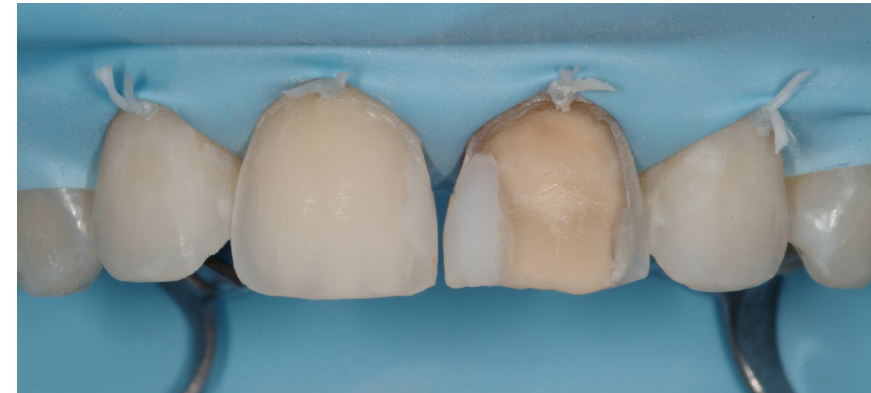


Properties	Restorative shades	Flowable shades
Filler content	83% (W) / 65% (V)	65.5% (W) / 38% (V)
Particle size range	0.02-3 μm	0.02-3 μm
Glass filler type	Barium glass with Zinc-Fluoride & nanoparticles	Barium glass with Zinc-Fluoride & nanoparticles
Glass average size	0.7 μm	0.7 μm
Matrix system	Bis-GMA	Bis-GMA
Flexural modulus	12.5 GPa	6 GPa
Flexural strength	150 MPa	120 MPa
Compressive strength	480 MPa	350 MPa
Working time	~1 min	~1 min



Form Corrections





Direct Veneers

..."simple and effective layering approach" does not mean to accept any compromise on the esthetic treatment outcome, on the contrary!





"What do I find so

1. The **inspiro** system is based on a simple and rational shading concept, consisting of universal dentin shades and multi-tint, multi-translucency enamels, which I have refined over the last decade. Using this straightforward approach, I am able to achieve the right combination for mimicking any natural tooth appearance.

For once, clinical excellence can

Dr. Didier Dietschi

Swi

special about the inspiro system?"

2. The **inspiro** effect shades give even more freedom to develop our "artistry" and achieve unsurpassed esthetic results following a simple, effective layering approach
3. I can pre-visualize and control the color integration thanks to the special bi-laminar **inspiro** shade guide; it means that when the **inspiro** shade sample matches the natural teeth, I will get it right!
4. I have an accurate selection of restorative and flowable consistencies suitable for various different clinical situations, from posterior restorations to more complex smile rehabilitations... effectively

be the result of simplicity and reliability!

ss haute couture

in esthetic dentistry



Esthetic Rehabilitation



Posterior Restorations



inspiro
direct

... the "Swiss haute couture" in direct esthetic restorations

TOOLBOXES

MASTER KIT REF 3010	INTRO KIT REF 3030	INSPIRO COMPULE TOOLBOX	MASTER KIT REF 3020	INTRO KIT REF 3040	INSPIRO SERINGUE TOOLBOX
90	70	Composite Dentin Compules	6	4	Composite Dentin Syringes
10	-	inspiro Body i0 Compule 0.3 g	1	-	inspiro Body i0 Syringe 3 g
15	15	inspiro Body i1 Compule 0.3 g	1	1	inspiro Body i1 Syringe 3 g
20	20	inspiro Body i2 Compule 0.3 g	1	1	inspiro Body i2 Syringe 3 g
20	20	inspiro Body i3 Compule 0.3 g	1	1	inspiro Body i3 Syringe 3 g
15	15	inspiro Body i4 Compule 0.3 g	1	1	inspiro Body i4 Syringe 3 g
10	-	inspiro Body i5 Compule 0.3 g	1	-	inspiro Body i5 Syringe 3 g
80	60	Composite Enamel Compules	5	3	Composite Enamel Syringes
20	20	inspiro Skin Bleach Compule 0.3 g	1	1	inspiro Skin Bleach Syringe 3 g
20	20	inspiro Skin White Compule 0.3 g	1	1	inspiro Skin White Syringe 3 g
20	20	inspiro Skin Neutral Compule 0.3 g	1	1	inspiro Skin Neutral Syringe 3 g
10	-	inspiro Skin Transparent Compule 0.3 g	1	-	inspiro Skin Transparent Syringe 3 g
10	-	inspiro Skin Ivory Compule 0.3 g	1	-	inspiro Skin Ivory Syringe 3 g
7	3	Composite Dentin Flowable	7	3	Composite Dentin Flowable
1	1	inspiro Flowable Body i1 Syringe 1.5 g	1	1	inspiro Flowable Body i1 Syringe 1.5 g
1	1	inspiro Flowable Body i2 Syringe 1.5 g	1	1	inspiro Flowable Body i2 Syringe 1.5 g
1	1	inspiro Flowable Body i3 Syringe 1.5 g	1	1	inspiro Flowable Body i3 Syringe 1.5 g
1	-	inspiro Flowable Body i4 Syringe 1.5 g	1	-	inspiro Flowable Body i4 Syringe 1.5 g
1	-	inspiro Flowable Body i5 Syringe 1.5 g	1	-	inspiro Flowable Body i5 Syringe 1.5 g
1	-	inspiro Flowable Body i6 Syringe 1.5 g	1	-	inspiro Flowable Body i6 Syringe 1.5 g
1	-	inspiro Flowable Body i7 Syringe 1.5 g	1	-	inspiro Flowable Body i7 Syringe 1.5 g
3	2	Composite Enamel Flowable	3	2	Composite Enamel Flowable
1	-	inspiro Flowable Skin Bleach Syringe 1.5 g	1	-	inspiro Flowable Skin Bleach Syringe 1.5 g
1	1	inspiro Flowable Skin White Syringe 1.5 g	1	1	inspiro Flowable Skin White Syringe 1.5 g
1	1	inspiro Flowable Skin Neutral Syringe 1.5 g	1	1	inspiro Flowable Skin Neutral Syringe 1.5 g
5	3	Effect Shades	5	3	Effect Shades
1	1	inspiro Effect Shade Azur Syringe 1.5 g	1	1	inspiro Effect Shade Azur Syringe 1.5 g
1	-	inspiro Effect Shade Ice Syringe 1.5 g	1	-	inspiro Effect Shade Ice Syringe 1.5 g
1	-	inspiro Effect Shade Opaque Syringe 1.5 g	1	-	inspiro Effect Shade Opaque Syringe 1.5 g
1	1	inspiro Effect Shade Chroma Syringe 1.5 g	1	1	inspiro Effect Shade Chroma Syringe 1.5 g
1	1	inspiro Effect Shade Fissure Syringe 1.5 g	1	1	inspiro Effect Shade Fissure Syringe 1.5 g
		Accessories			Accessories
1	1	inspiro Shade Guide	1	1	inspiro Shade Guide
20	20	inspiro Application Tips	20	20	inspiro Application Tips



REFILLS

COMPOSITE DENTIN COMPULES REFILLS

3200	inspiro Body i0 Refill Compule	10 x 0.3 g
3210	inspiro Body i1 Refill Compule	10 x 0.3 g
3215	inspiro Body i1 Refill Compule	20 x 0.3 g
3220	inspiro Body i2 Refill Compule	10 x 0.3 g
3225	inspiro Body i2 Refill Compule	20 x 0.3 g
3230	inspiro Body i3 Refill Compule	10 x 0.3 g
3235	inspiro Body i3 Refill Compule	20 x 0.3 g
3240	inspiro Body i4 Refill Compule	10 x 0.3 g
3245	inspiro Body i4 Refill Compule	20 x 0.3 g
3250	inspiro Body i5 Refill Compule	10 x 0.3 g

COMPOSITE ENAMEL COMPULES REFILLS

3300	inspiro Skin Bleach Refill Compule	10 x 0.3 g
3305	inspiro Skin Bleach Refill Compule	20 x 0.3 g
3310	inspiro Skin White Refill Compule	10 x 0.3 g
3315	inspiro Skin White Refill Compule	20 x 0.3 g
3320	inspiro Skin Neutral Refill Compule	10 x 0.3 g
3325	inspiro Skin Neutral Refill Compule	20 x 0.3 g
3330	inspiro Skin Transparent Refill Compule	10 x 0.3 g
3340	inspiro Skin Ivory Refill Compule	10 x 0.3 g

COMPOSITE DENTIN SYRINGES REFILLS

3400	inspiro Body i0 Refill Syringe	1 x 3.0 g
3410	inspiro Body i1 Refill Syringe	1 x 3.0 g
3420	inspiro Body i2 Refill Syringe	1 x 3.0 g
3430	inspiro Body i3 Refill Syringe	1 x 3.0 g
3440	inspiro Body i4 Refill Syringe	1 x 3.0 g
3450	inspiro Body i5 Refill Syringe	1 x 3.0 g

COMPOSITE ENAMEL SYRINGES REFILLS

3500	inspiro Skin Bleach Refill Syringe	1 x 3.0 g
3510	inspiro Skin White Refill Syringe	1 x 3.0 g
3520	inspiro Skin Neutral Refill Syringe	1 x 3.0 g
3530	inspiro Skin Transparent Refill Syringe	1 x 3.0 g
3540	inspiro Skin Ivory Refill Syringe	1 x 3.0 g

COMPOSITE DENTIN FLOWABLE REFILLS

3610	inspiro Flowable Body i1 Refill Syringe	1 x 1.5 g
3620	inspiro Flowable Body i2 Refill Syringe	1 x 1.5 g
3630	inspiro Flowable Body i3 Refill Syringe	1 x 1.5 g
3640	inspiro Flowable Body i4 Refill Syringe	1 x 1.5 g
3650	inspiro Flowable Body i5 Refill Syringe	1 x 1.5 g
3660	inspiro Flowable Body i6 Refill Syringe	1 x 1.5 g
3670	inspiro Flowable Body i7 Refill Syringe	1 x 1.5 g

COMPOSITE ENAMEL FLOWABLE REFILLS

3700	inspiro Flowable Skin Bleach Refill Syringe	1 x 1.5 g
3710	inspiro Flowable Skin White Refill Syringe	1 x 1.5 g
3720	inspiro Flowable Skin Neutral Refill Syringe	1 x 1.5 g

EFFECT SHADE REFILLS

3800	inspiro Effect Shade Azur Refill Syringe	1 x 1.5 g
3810	inspiro Effect Shade Ice Refill Syringe	1 x 1.5 g
3820	inspiro Effect Shade Opaque Refill Syringe	1 x 1.5 g
3830	inspiro Effect Shade Chroma Refill Syringe	1 x 1.5 g
3840	inspiro Effect Shade Fissure Refill Syringe	1 x 1.5 g

ACCESSORIES

3900	inspiro Shade Guide	
3910	inspiro Application Tips Refill	20 pieces



DIRECT RESTORATIVES

inspir^o
direct

Edelweiss DR AG
Unter Altstadt 28, Mercandor
6300 Zug
Switzerland
Tel. +41 41 933 33 77
+41 41 911 33 77
Fax +41 41 370 33 77
info@edelweissdr.com
www.edelweissdr.com



DIRECT RESTORATIVES

Art pictures courtesy of Dudu Meideros
www.clickdudu.com

Clinical Cases courtesy of Dr. Didier Dietschi
www.edudentinternational.com

9 000 /2017-10

